



PPO IMPACT

Utilizing your most frequently used and high-producing CDT codes, we've assessed your current contracted plans, potential lease arrangements, and determined the adjustments for each and their impact on your patient base. We appreciate the opportunity to review your PPO contracts and make recommendations on steps that will *benefit* the practice. We can provide guides to help you renegotiate fees, restructure lease arrangements, calculator tools to estimate the potential *impact* of dropping a plan, give plan guidelines to retain the most patients, and scripting for your team to help them handle those conversations with patients.



Did we mention this is a complimentary service for our partners?



Thank You

for providing the Practice Support Team with the reports needed to complete your personalized Practice Analysis reports. This assessment gives us the first glimpse into the story of your dental practice.

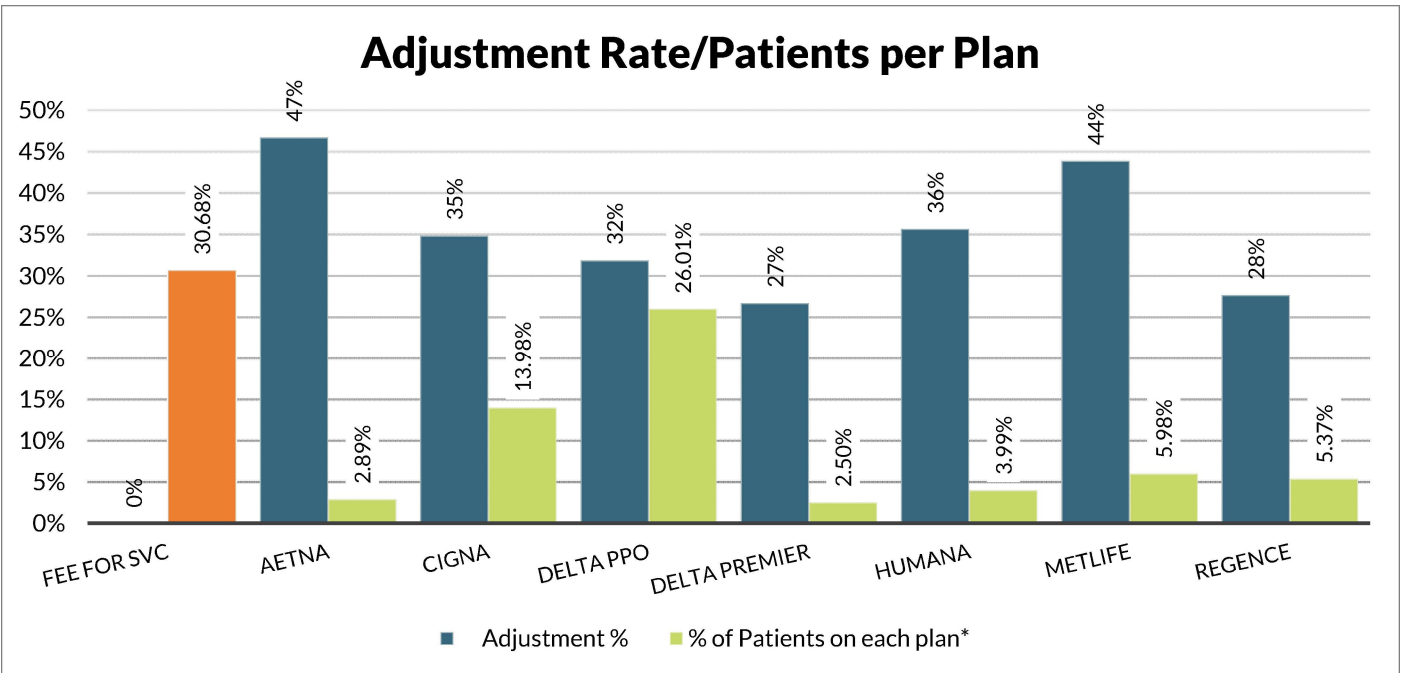
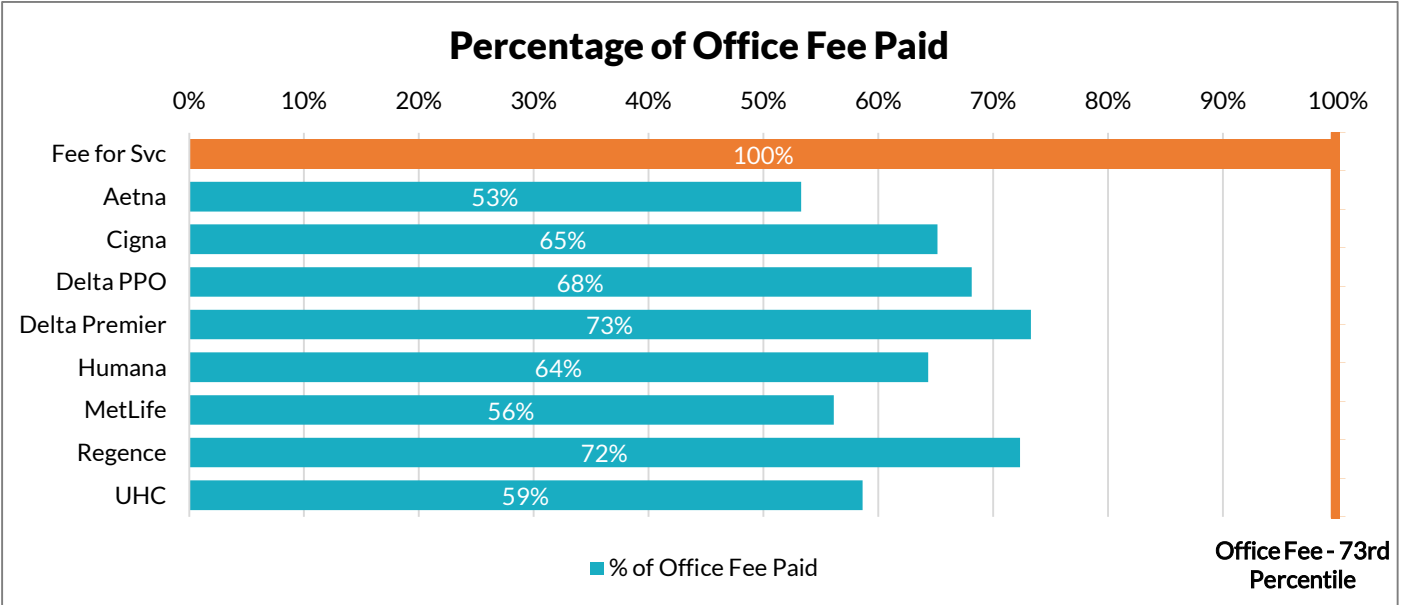
After reviewing this analysis, let's discuss the story behind the numbers. We invite you to set up a free call to review the findings. We want to celebrate your team's strengths and discuss potential growth opportunities. Our goal is to build an action plan with you!

Burkhart's Practice Support Team is a value-added, complimentary consulting service available to Burkhart's Supply Savings Guarantee clients and those spending an average of 40K annually on merchandise with Burkhart. It represents a commitment we have to contribute to the success of your practice.

PPO Impact Analysis

Dr. Kerry Sample

12/4/2025



Estimated Active Patient Count: 3,914

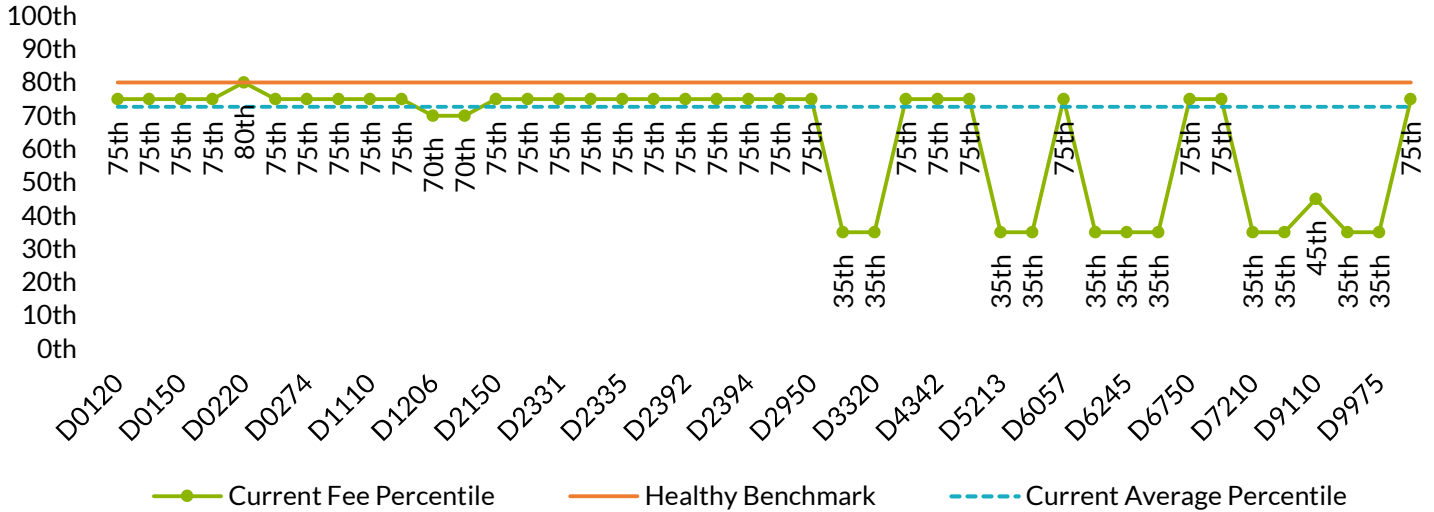
Annual Patient Value (Production/Collections): \$ 1,125 / \$ 731

Your PPO Analysis was created by comparing contracted fee plans to your full office fee schedule, weighted by the frequency usage of each code on your Procedure Code Report. This analysis provides an estimated adjustment percentage by plan. If provided to PST, you can also see the percentage of your patient base on each plan to better understand the exposure by contract. This analysis does not estimate downgraded services that will be unique by group within each plan. For a better understanding of this analysis, and next steps, please reach out to the Practice Support Team.



Dr. Kerry Sample

Current Fee Percentile Range



Overall fee percentile = 73rd

Code	Practice Fee	Fee Percentile	Zip code 98370
			80th
D0120	\$81	75th	\$85
D0140	\$120	75th	\$123
D0150	\$142	75th	\$145
D0210	\$201	75th	\$203
D0220	\$47	80th	\$47
D0230	\$40	75th	\$41
D0274	\$97	75th	\$99
D0330	\$175	75th	\$177
D1110	\$145	75th	\$146
D1120	\$103	75th	\$107
D1206	\$59	70th	\$63
D1351	\$82	70th	\$86
D2150	\$283	75th	\$305
D2330	\$261	75th	\$267
D2331	\$312	75th	\$320
D2332	\$381	75th	\$388
D2335	\$476	75th	\$486
D2391	\$280	75th	\$286
D2392	\$355	75th	\$364
D2393	\$434	75th	\$442

Code	Practice Fee	Fee Percentile	Zip code 98370
			80th
D2394	\$510	75th	\$519
D2740	\$1,678	75th	\$1,711
D2950	\$410	75th	\$415
D3310	\$0	NA	\$1,158
D3320	\$0	NA	\$1,318
D4341	\$381	75th	\$389
D4342	\$292	75th	\$296
D4910	\$205	75th	\$211
D5213	\$0	NA	\$2,862
D6010	\$0	NA	\$2,768
D6057	\$1,290	75th	\$1,303
D6058	\$0	NA	\$1,993
D6245	\$0	NA	\$1,680
D6740	\$0	NA	\$1,699
D6750	\$1,697	75th	\$1,725
D7140	\$298	75th	\$307
D7210	\$0	NA	\$443
D8090	\$0	NA	\$6,735
D9110	\$176	<40th	\$210
D9944	\$862	75th	\$869



Fee Increase Recommendations

Dr. Kerry Sample

Zip Code: 98370

CODE	Office Fee	80th PERCENTILE	Recommendation	Recommended Fee	Fee Change
D0120	\$81	\$85	Increase to 80th	\$85	\$4
D0140	\$120	\$123	Increase to 80th	\$123	\$3
D0150	\$142	\$145	Increase to 80th	\$145	\$3
D0210	\$201	\$203	Increase to 80th	\$203	\$2
D0220	\$47	\$47	No Change	\$47	\$0
D0230	\$40	\$41	Increase to 80th	\$41	\$1
D0274	\$97	\$99	Increase to 80th	\$99	\$2
D0330	\$175	\$177	Increase to 80th	\$177	\$2
D1110	\$145	\$146	Increase to 80th	\$146	\$1
D1120	\$103	\$107	Increase to 80th	\$107	\$4
D1206	\$59	\$63	Increase to 80th	\$63	\$4
D1351	\$82	\$86	Increase to 80th	\$86	\$4
D2150	\$283	\$305	Increase to 80th	\$305	\$22
D2330	\$261	\$267	Increase to 80th	\$267	\$6
D2331	\$312	\$320	Increase to 80th	\$320	\$8
D2332	\$381	\$388	Increase to 80th	\$388	\$7
D2335	\$476	\$486	Increase to 80th	\$486	\$10
D2391	\$280	\$286	Increase to 80th	\$286	\$6
D2392	\$355	\$364	Increase to 80th	\$364	\$9
D2393	\$434	\$442	Increase to 80th	\$442	\$8
D2394	\$510	\$519	Increase to 80th	\$519	\$9
D2740	\$1,678	\$1,711	Increase to 80th	\$1,711	\$33
D2950	\$410	\$415	Increase to 80th	\$415	\$5
D3310	\$0	\$1,158	Increase to 80th	\$1,158	\$1,158
D3320	\$0	\$1,318	Increase to 80th	\$1,318	\$1,318
D4341	\$381	\$389	Increase to 80th	\$389	\$8
D4342	\$292	\$296	Increase to 80th	\$296	\$4
D4910	\$205	\$211	Increase to 80th	\$211	\$6
D5213	\$0	\$2,862	Increase to 80th	\$2,862	\$2,862
D6010	\$0	\$2,768	Increase to 80th	\$2,768	\$2,768
D6057	\$1,290	\$1,303	Increase to 80th	\$1,303	\$13
D6058	\$0	\$1,993	Increase to 80th	\$1,993	\$1,993
D6245	\$0	\$1,680	Increase to 80th	\$1,680	\$1,680
D6740	\$0	\$1,699	Increase to 80th	\$1,699	\$1,699
D6750	\$1,697	\$1,725	Increase to 80th	\$1,725	\$28
D7140	\$298	\$307	Increase to 80th	\$307	\$9
D7210	\$0	\$443	Increase to 80th	\$443	\$443
D8090	\$0	\$6,735	Increase to 80th	\$497	\$497
D9110	\$176	\$210	Increase to 80th	\$429	\$253
D9944	\$862	\$869	Increase to 80th	\$869	\$7



Practice Support Team

PracticeSupportTeam@BurkhartDental.com

1.800.665.5323

BurkhartDental.com



PPO Plan Drop Loss Calculator

Please fill in areas indicated in *green only*

PPO Plan Evaluated	
Annual Practice Production	
Annual Production from selected Plan	
Number of patients on selected plan	
Current annual per patient production for selected plan	
Weighted average percentage write off for selected plan (enter as decimal)	
Estimated annual per patient production without adjustment	

Drop Scenarios	100% patient retention	75% patient retention	50% patient retention	25% patient retention	Break Even
Patients retained					
Patient annual value, no adjustment applied					
Annual Production Expected					
Less Current Production					
Potential Annual Production Gain/Loss					

Please reach out to PracticeSupportTeam@BurkhartDental.com or 1.800.665.5323 for a comprehensive PPO Analysis and individualized drop plan strategies